

March 15, 2019

**schaefer**

CONNECT

Bob Foley

Connect-EZ  
184 Maple St.  
Harveysburg, OH 45032

Re: Connect-EZ Column Socket Review (OSHA 1926.755a2)  
Schaefer Project Number: 1911.20

Dear Bob,

At your request, I've reviewed the structural capacity of the Connect-EZ Column Socket System components listed below to meet the criteria of OSHA regulation 1926.755(a)(2). This review is limited to the Connect-EZ socket systems for structural steel HSS square columns ranging from 4" wide to 16" wide, with baseplates and connections as shown in the attached (2) sketches.

Based on my review, I have determined that the socket system components listed below have adequate capacity to meet the requirements of OSHA regulation 1926.755(a)(2). Refer to the attached sketches SK-1 and SK-2 in the appendix for sleeve fabrication assumptions provided by you and additional field installation assumptions used for this review and required to meet OSHA regulation 1926.755(a)(2). If any of the assumptions shown on the attached sketches cannot be met, please contact Schaefer for a supplemental review.

OSHA regulation 1926.755(a)(2): Each column anchor rod (anchor bolt) assembly, including the column-to-base plate weld and the column foundation, shall be designed to resist a minimum eccentric gravity load of 300 pounds (136.2 kg) located 18 inches (.46m) from the extreme outer face of the column in each direction at the top of the column shaft.

I reviewed the following components for capacity for OSHA regulation 1926.755(a)(2):

- Square HSS or Double-U Shaped Sleeve
- Weld between Sleeve and Baseplate
- Baseplate
- Anchor Bolts

**schaefer-inc.com**  
537 East Pete Rose Way, Suite 400  
Cincinnati, Ohio 45202  
800.542.3302

# schaefer

Thank you for the opportunity to assist you with this project. If you have any questions, or if I may be of further assistance, please do not hesitate to contact me.

Sincerely,



**Prepared By:**  
Matt Kozma  
Project Engineer



**Reviewed By:**  
Nathan Walsman, P.E. (OH)  
Principal

Enclosure

Project Name: CONNECT-EZ COLUMN SOCKET REVIEW

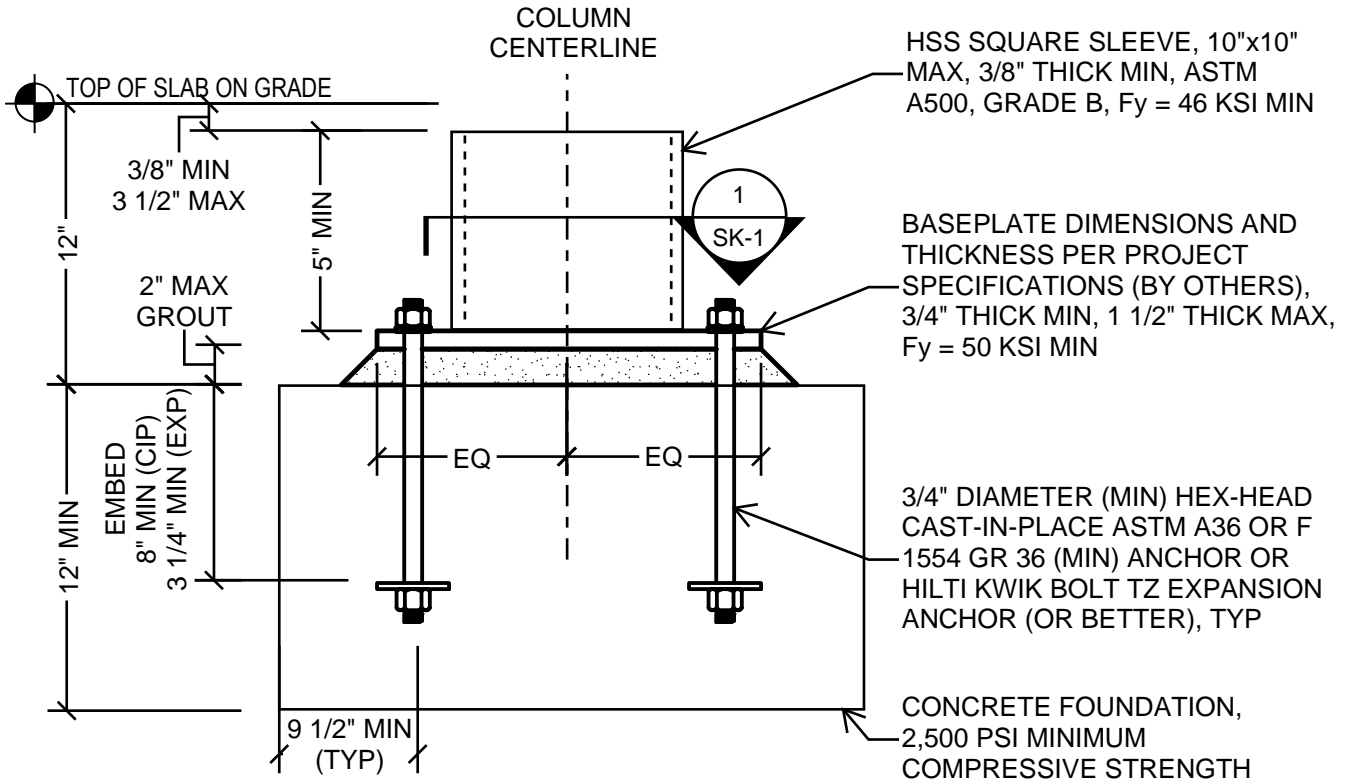
Project Number: 1911.20

Subject: SLEEVES FOR HSS COLUMNS 4" TO 9" WIDE

Date: 03/15/19

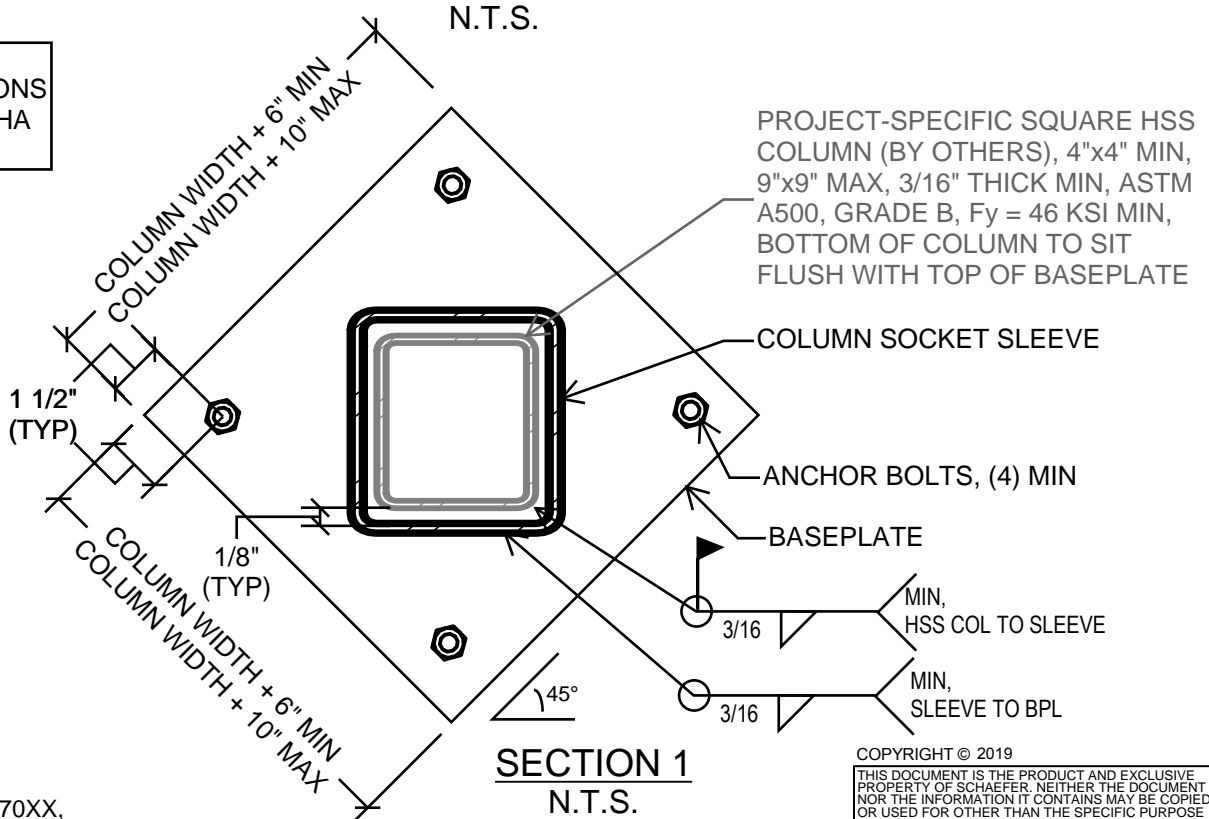
Author: MAK/KAP

Page: SK-1



**COLUMN SOCKET SLEEVE ASSUMPTIONS  
(PROJECT-SPECIFIC COLUMN 4" TO 9" WIDE)**

COLUMN SOCKET SLEEVE ASSUMPTIONS REVIEWED FOR OSHA 1926.755(a)(2)



**SECTION 1  
N.T.S.**

WELD MATERIAL: AWS E70XX, LOW HYDROGEN ELECTRODES

COPYRIGHT © 2019  
THIS DOCUMENT IS THE PRODUCT AND EXCLUSIVE PROPERTY OF SCHAEFER. NEITHER THE DOCUMENT NOR THE INFORMATION IT CONTAINS MAY BE COPIED OR USED FOR OTHER THAN THE SPECIFIC PURPOSE FOR WHICH IT WAS PREPARED, WITHOUT THE WRITTEN CONSENT OF SCHAEFER.

Project Name: CONNECT-EZ COLUMN SOCKET REVIEW

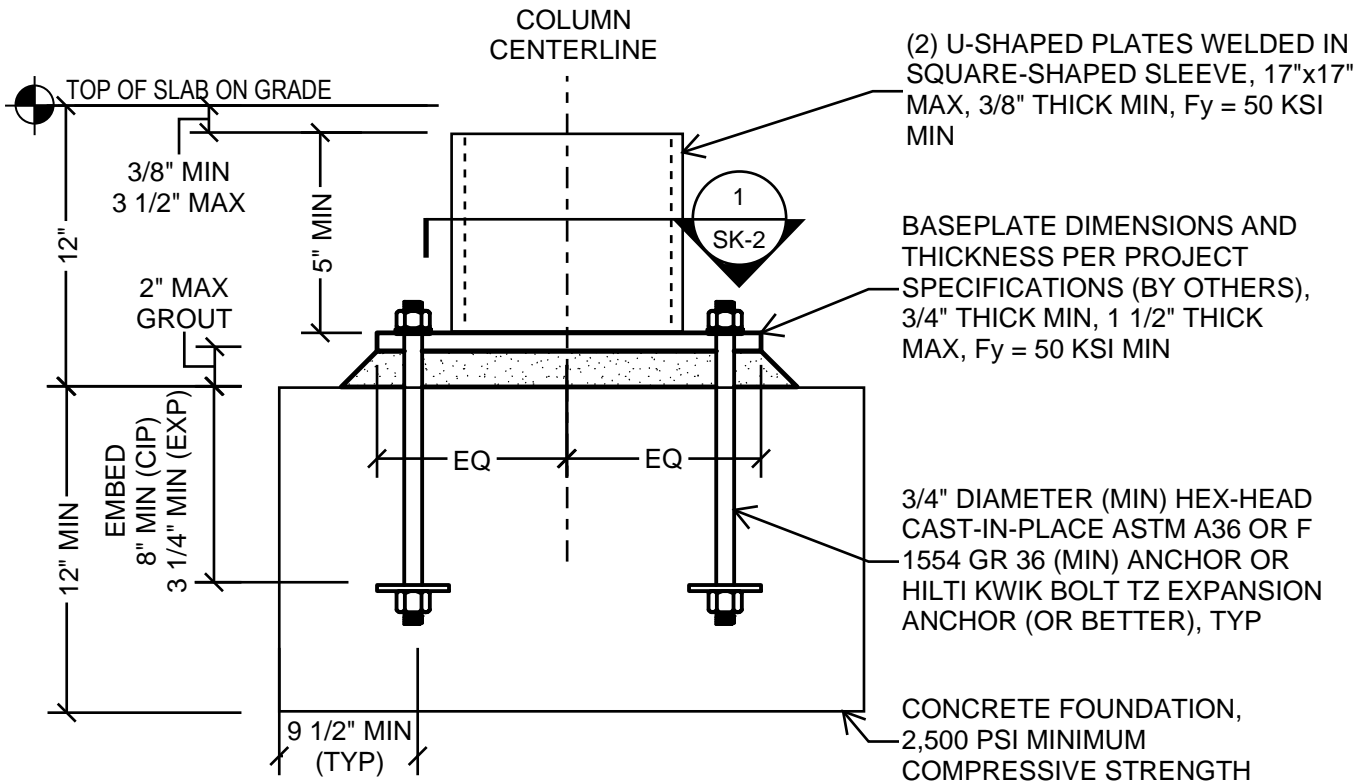
Project Number: 1911.20

Subject: SLEEVES FOR HSS COLUMNS 10" TO 16" WIDE

Date: 03/15/19

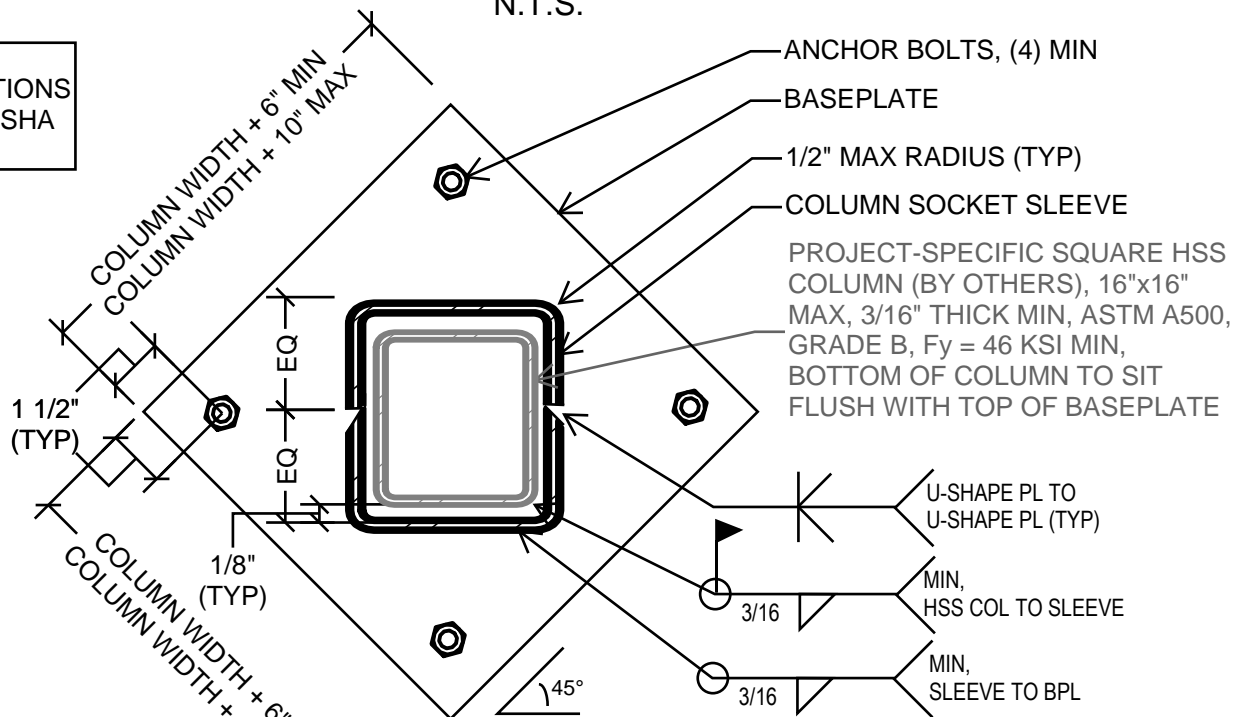
Author: MAK/KAP

Page: SK-2



**COLUMN SOCKET SLEEVE ASSUMPTIONS**  
 (PROJECT-SPECIFIC COLUMN 10" TO 16" WIDE)  
 N.T.S.

COLUMN SOCKET SLEEVE ASSUMPTIONS REVIEWED FOR OSHA 1926.755(a)(2)



**SECTION 1**  
 N.T.S.

WELD MATERIAL: AWS E70XX, LOW HYDROGEN ELECTRODES

COPYRIGHT © 2019

THIS DOCUMENT IS THE PRODUCT AND EXCLUSIVE PROPERTY OF SCHAEFER. NEITHER THE DOCUMENT NOR THE INFORMATION IT CONTAINS MAY BE COPIED OR USED FOR OTHER THAN THE SPECIFIC PURPOSE FOR WHICH IT WAS PREPARED, WITHOUT THE WRITTEN CONSENT OF SCHAEFER.